



FEATURES & APPLICATIONS

Features:

Formed 316L Stainless Steel Housing with Flush Mounting Base & Vandal-Resistant Screws, Domed Top, Internal Ballast Tray for Easy Maintenance.

Cast Aluminum Louvers (*DTRBAAL*)

Heavy-Duty Die-Cast Aluminum Cap/Top

One-Piece Injection Molded Polycarbonate Vandal-Resistant Lens with UV Inhibitors

Silicone Gaskets

Cast Aluminum Mounting Plate with 8" Anchor Bolts

CSA Listed for Wet Locations

Applications:

Decorative and Functional for Walkways and Driveways, Residential Areas, & Commercial Areas

Accessories Sold Separately

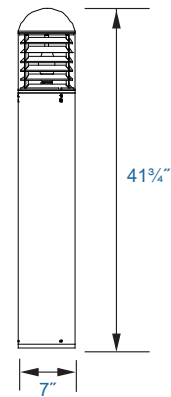
Stainless Steel Dome Bollard with Louvers



DTRBAALSS



DIMENSIONS



DTRBAALSS

ORDER INFORMATION

Typical Ordering Number:

D-42w-CFL-DTRBAALSS-120-277



1. Wattage/Lamp

Compact Fluorescent:

D-42w-CFL
D-57w-CFL

Pulse Start Metal Halide:

D-70w-PSMH
D-100w-PSMH

High Pressure Sodium:

D-35w-HPS
D-50w-HPS
D-70w-HPS
D-100w-HPS

2. Fixture Type

Stainless Steel Dome Top
Round Bollard Anodized
Aluminum Louver:
DTRBAALSS

3. Voltage

Multi-tap: *MT*
120v: *120*
120-277v: *120-277*

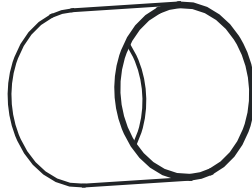
4. Options

Mounting Kit w/ 4" Anchor Bolts: *MK4*
Mounting Kit w/ 8" Anchor Bolts: *MK8*
Mounting Kit w/ 12" Anchor Bolts: *MK12*
Mounting Kit w/ 15" Anchor Bolts: *MK15*
Replacement Polycarbonate Lens: *RPL*
GFCI Outlet, 15A, 120V: *GF1*

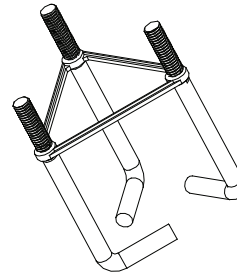
ACCESSORIES

OPTIONS:

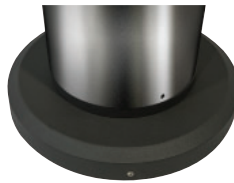
- Mounting Kit w/ 4" Anchor Bolts: **MK4**
- Mounting Kit w/ 8" Anchor Bolts: **MK8**
- Mounting Kit w/ 12" Anchor Bolts: **MK12**
- Mounting Kit w/ 15" Anchor Bolts: **MK15**
- Replacement Round Polycarbonate
 Root Mount Kit: **BOLRM**
- Bollard Retrofit Base Kit: **BREBASE**
- Adapter Plate with Gaskets for Outlet
 Boxes: **BOADP1**



RPL



MK4, MK8, MK12, MK15

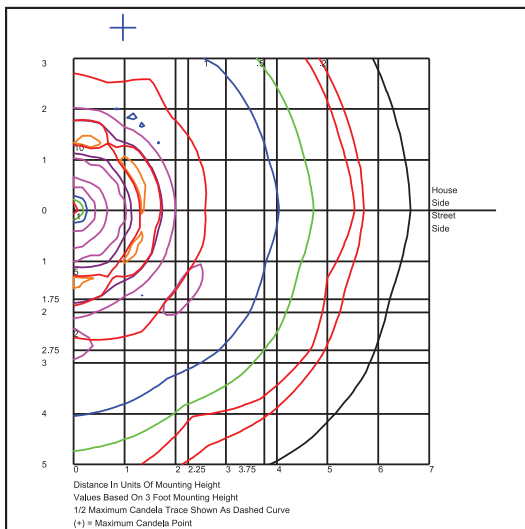


BREBASE

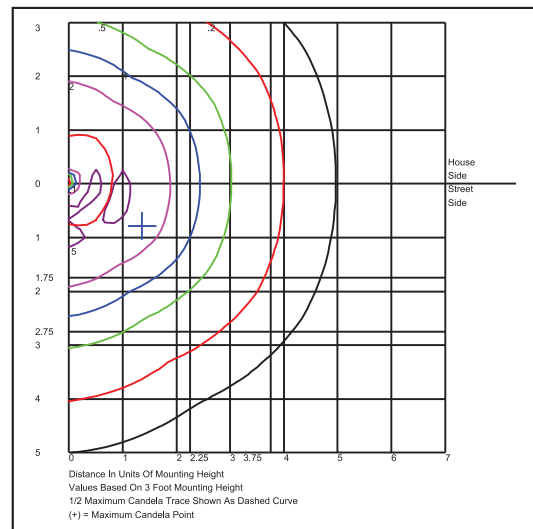


BOADP1

PHOTOMETRICS



100w-MH-DTRBAAL



42w-CFL-DTRBAAL

Specifications subject to change without notice.