

BKH1Q/BKH2Q DuraLED Mini Hampton Kitty Hawk Bollard



Project Name:	Project Information	Fixture Type:
Complete Catalog #:		Date:
Comments:		

The DuraGuard BKH Bollard with choice of optics are designed to replace HID lighting systems up to 100w MH or HPS. These fixtures are ideal for retail centers, industrial parks, schools and universities, public transit and airports, office buildings and medical facilities.

SPECIFICATIONS AND FEATURES:

HOUSING:

Extruded Aluminum Housing with Flush Mounting Base & Vandal-Resistant Screws. Fixture has Die Cast Aluminum Housing and Front Frame, Integral Heat Sinking and Driver Compartment. Nickel-Plated Stainless Steel Hardware.

LISTING & RATINGS:

CSA: Listed for Wet Locations, ANSI/UL 1598, 8750 IP66 Sealed LED Compartment.

FINISH:

Textured Architectural Bronze Powdercoat Finish Over a Chromate Conversion Coating. Custom Colors Available Upon Request.

LENS:

Tempered Clear Flat or SoftLED Flat Glass Lens

MOUNTING OPTIONS:

Mounting Kit with 8" Anchor Bolts, Included.

DURALED:

Aluminum Boards

WATTAGE:

22w Array: 21.7w, System: 23.8w;
37w Array: 37.2w, System: 43w;
44w Array: 43.4w, System: 47.6w;
74w Array: 74.4w, System: 86w

DRIVER:

Electronic Driver, 120-277V, 50/60Hz or 347V, 50/60Hz (37w Model Only); Less Than 20% THD and PF>0.90. Standard Internal Surge Protection is 2kV for 22w, 6kV for 37w. 0-10V Dimming Standard for a Dimming Range of 100% to 10%; Dimming Source Current is 150 Microamps.

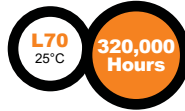
CONTROLS:

Fixtures Ordered with Factory-Installed Motion Sensor Controls are Internally Wired for Switching and/or 1-10V Dimming Within the Housing. Remote Direct Wired Interface of 1-10V Dimming is Not Implied and May Not Be Available, Please Consult Factory. Fixtures are Tested with DuraGuard Controls and May Not Function Properly With Controls Supplied By Others. Fixtures are NOT Designed for Use with Line Voltage Dimmers.

WARRANTY:

5-Year Warranty for -40°C to +50°C Environment.

See Page 2 for Projected Lumen Maintenance Table.

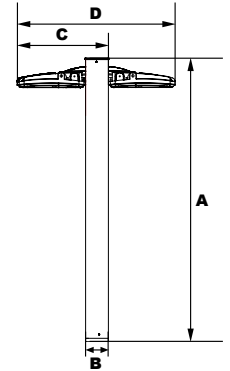


Single Bollard (BKH1Q)

Twin Bollard (BKH2Q)

Shown with GFCI

Shown with "S3" Sensor



Dimensions

Single Width (C)	15 3/4" (398mm)
Twin Width (D)	27 1/2" (700mm)
Length (B)	4" (102mm)
Height (A)	48 3/4" (1236mm)

DuraLED TECHNOLOGY

Complete Units
Ordering Information
Example: BKH2QF2X37U5KCZSP

BKH1Q/BKH2Q DuraLED Mini Hampton Kitty Hawk Bollard

Model	Optics/Beams	Wattage	Driver	CCT	Lens	Color	Height	Options
		1X22 =22w 1X37 =37w 2X22 =44w 2X37 =74w	U =120-277V C =347V* *37 & 74w Model Only.	3K =3000K* 4K =4000K 5K =5000K *Use with 37w & 74w F Optic Only.	C =Standard Clear Flat Glass Lens S =SoftLED Flat Glass Lens* *Use with Type V Models Only	Z =Bronze C =Custom (Consult Factory)	(Leave Blank) =48" Standard Height 36 =36" Height 30 =30" Height	SF =Single Fuse (120-277V Only) DF =Double Fuse (120-277V Only) SP =Surge Protection GF1 =GFCI Outlet, 15A, 120V S3 =Internal Microwave Sensor (120-277V Only)
C =Type III/NEMA 7H x 7V F =Type V/NEMA 7H x 7V See Pages 3 & 4 for Distribution Information.								
BKH1Q =DuraLED Mini Hampton Kitty Hawk Single Bollard BKH2Q =DuraLED Mini Hampton Kitty Hawk Twin Bollard								

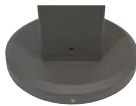


Specifications subject to change without notice.

BKH1Q/BKH2Q DuraLED Mini Hampton Kitty Hawk Bollard



ACCESSORIES & REPLACEMENT PARTS:



BREBASE*



P17122



P17121

*Shown Mounted

Mounting Accessories (Order Separately, Field Installed)	
BREBASE*	Bollard Retrofit Base Kit Adapts New Bollards to Most Existing Bolt Patterns. Fits all DuraGuard Bollards. Die Cast with Powdercoat Finish, Hardware Included. 1 1/2" Dia. x 1 1/2" H
*Specify Color: Z=Bronze, B=Black, C=Custom (Consult Factory)	

Accessories (Order Separately, Field Installed)	
P17122	Remote Programming Tool for P17121

Replacement Parts (Order Separately, Field Installed)	
P17121	Internal Microwave Sensor (120-277V Only)
KH15GL	Tempered Clear Flat Glass Lens.
KH15GLSS	SoftLED Flat Glass Lens

PHOTOMETRIC PERFORMANCE

LED Board Watts	Drive Current (mA)	Input Watts	Optics	5000 CCT 80 CRI					4000 CCT 80 CRI					3000 CCT 80 CRI					
				Lumens	LPW	B	U	G	Lumens	LPW	B	U	G	Lumens	LPW	B	U	G	
DuraLED 22w	525	24	C	Type III	2,875	116	1	0	1	2,681	108	1	0	1	-	-	-	-	-
			F	Type V	2,742	111	1	0	0	2,557	103	1	0	0	-	-	-	-	-
DuraLED 37w	525	43	C	Type III	4,834	118	1	0	1	4,508	110	1	0	1	4,351	102	1	0	1
			F	Type V	4,611	113	2	0	0	4,300	105	2	0	0	4,150	97	2	0	0

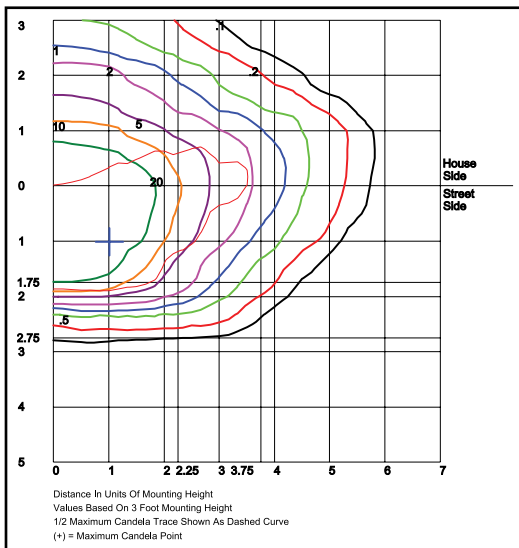
PROJECTED LUMEN MAINTENANCE

Data shown for 5000 CCT		Compare to MH				
TM-21-11	Input Watts	Initial	25,000 Hrs	50,000 Hrs	100,000 Hrs	Calculated LED Life
L70 Lumen Maintenance @ 25°C / 77°F	All wattages up to and including 43w	1.00	0.98	0.95	0.91	320,000
L70 Lumen Maintenance @ 50°C / 122°F		1.00	0.95	0.89	0.79	141,000
L80 Lumen Maintenance @ 40°C / 104°F		1.00	0.96	0.93	0.85	134,000

NOTES:

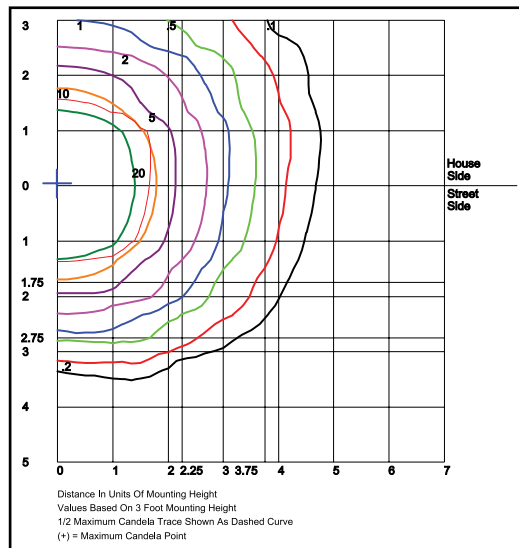
1. Projected per IESNA TM-21-11. Data references the extrapolated performance projections for the 525mA base model in a 25°C ambient, based on 10,000 hours of LED testing per IESNA LM-80-08.
2. Compare to MH box indicates suggested Light Loss Factor (LLF) to be used when comparing to Metal Halide (MH) systems.

PHOTOMETRIC DATA



BKH1QC1X37U5KC
Type III

Grid in MH
MH=4 Feet



BKH1QF1X37U5KC
Type V

Grid in MH
MH=4 Feet

Specifications subject to change without notice.